

# Typical Floor Plan - EDEN



8<sup>th</sup> to 13<sup>th</sup>, 15<sup>th</sup> to 20<sup>th</sup>, 22<sup>nd</sup> to 27<sup>th</sup>, 29<sup>th</sup> to 34<sup>th</sup> & 36<sup>th</sup>

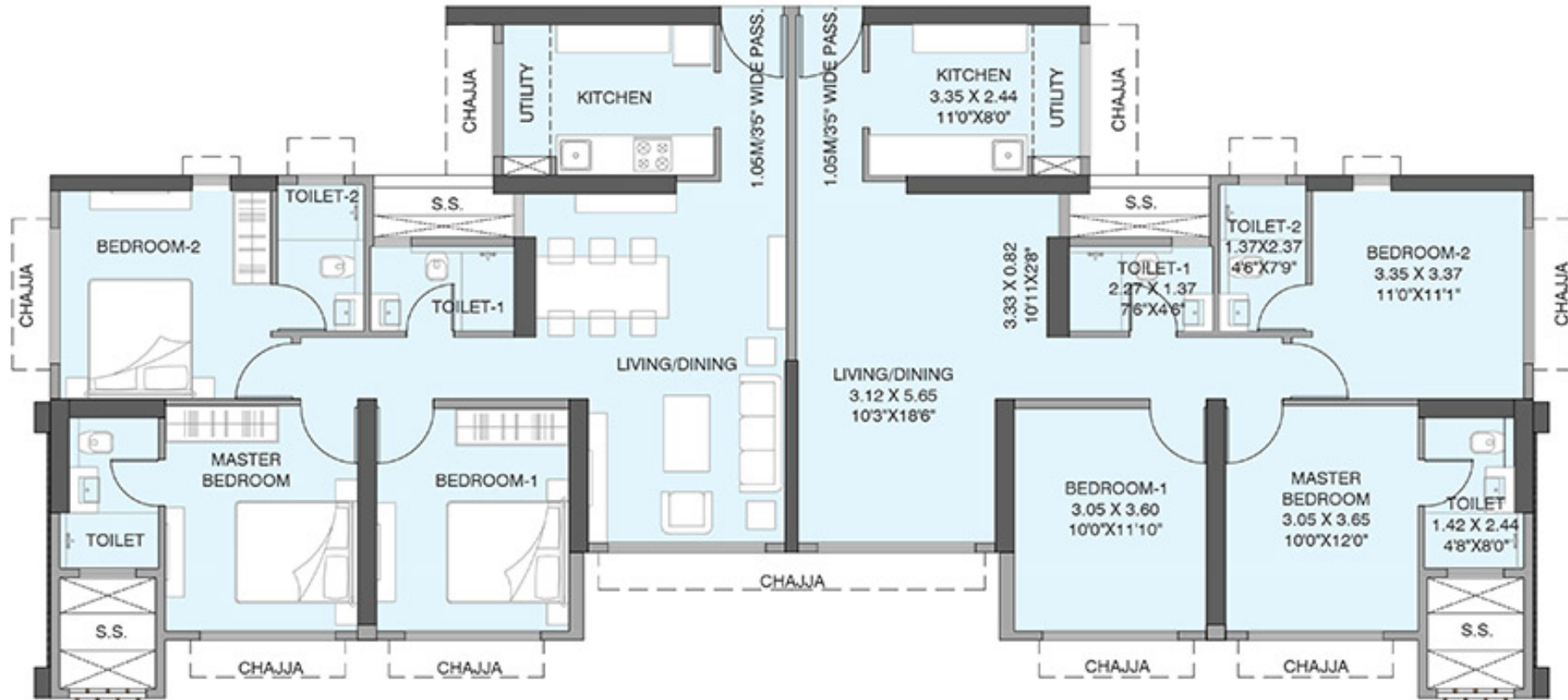


MaharERA Registration No. P51800024368 available at website: <http://maharera.mahaonline.gov.in>

Disclaimer - The information provided in this advertisement, including all pictures, visuals, perspective views of the building and amenities are as per architectural drawings and the same shall be constructed subject to approvals of competent authorities and shall be in compliance of RERA Act and Rules and Regulations. No Objection Certificate (NOC) permission of the mortgagee Bank would be provided for sale of flats/units/property, if required. Wing B has been represented as EDEN. \*T & C Apply.

# Unit Plan - EDEN

8<sup>th</sup> to 13<sup>th</sup>, 15<sup>th</sup> to 20<sup>th</sup>, 22<sup>nd</sup> to 27<sup>th</sup>, 29<sup>th</sup> to 34<sup>th</sup> & 36<sup>th</sup>



RERA Carpet Area 85.28 Sq.M. (918 Sq.ft)

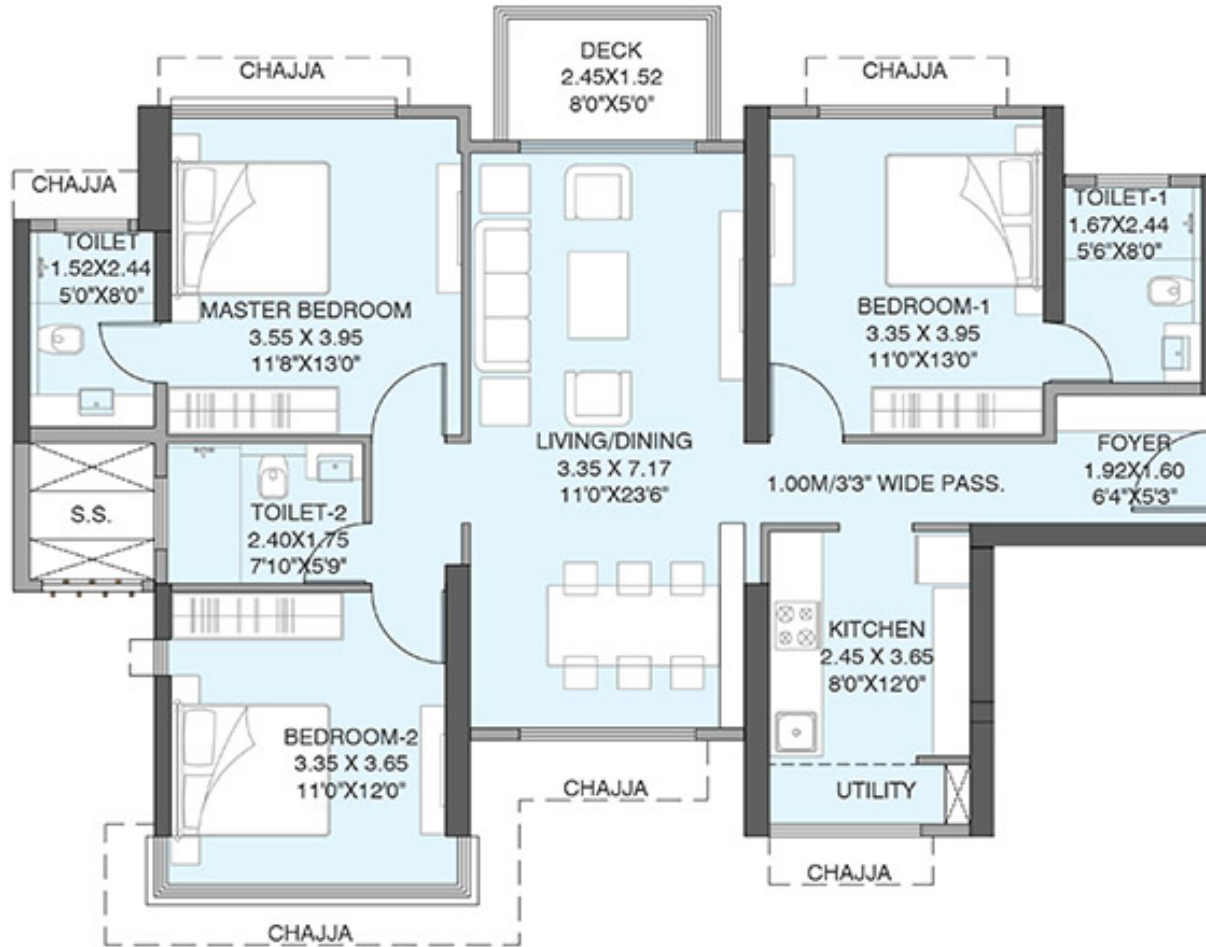


MahaRERA Registration No. P51800024368 available at website: <http://maharera.mahaonline.gov.in>

Disclaimer - The information provided in this advertisement, including all pictures, visuals, perspective views of the building and amenities are as per architectural drawings and the same shall be constructed subject to approvals of competent authorities and shall be in compliance of RERA Act and Rules and Regulations. No Objection Certificate (NOC) permission of the mortgagee Bank would be provided for sale of flats/units/property, if required. Wing B has been represented as EDEN. \*T & C Apply.

# Unit Plan - EDEN

8<sup>th</sup> to 13<sup>th</sup>, 15<sup>th</sup> to 20<sup>th</sup>, 22<sup>nd</sup> to 27<sup>th</sup>, 29<sup>th</sup> to 34<sup>th</sup> & 36<sup>th</sup>



RERA Carpet Area 99.68 + Balcony 3.72 Sq.M. (1073 + 40 Sq.ft)



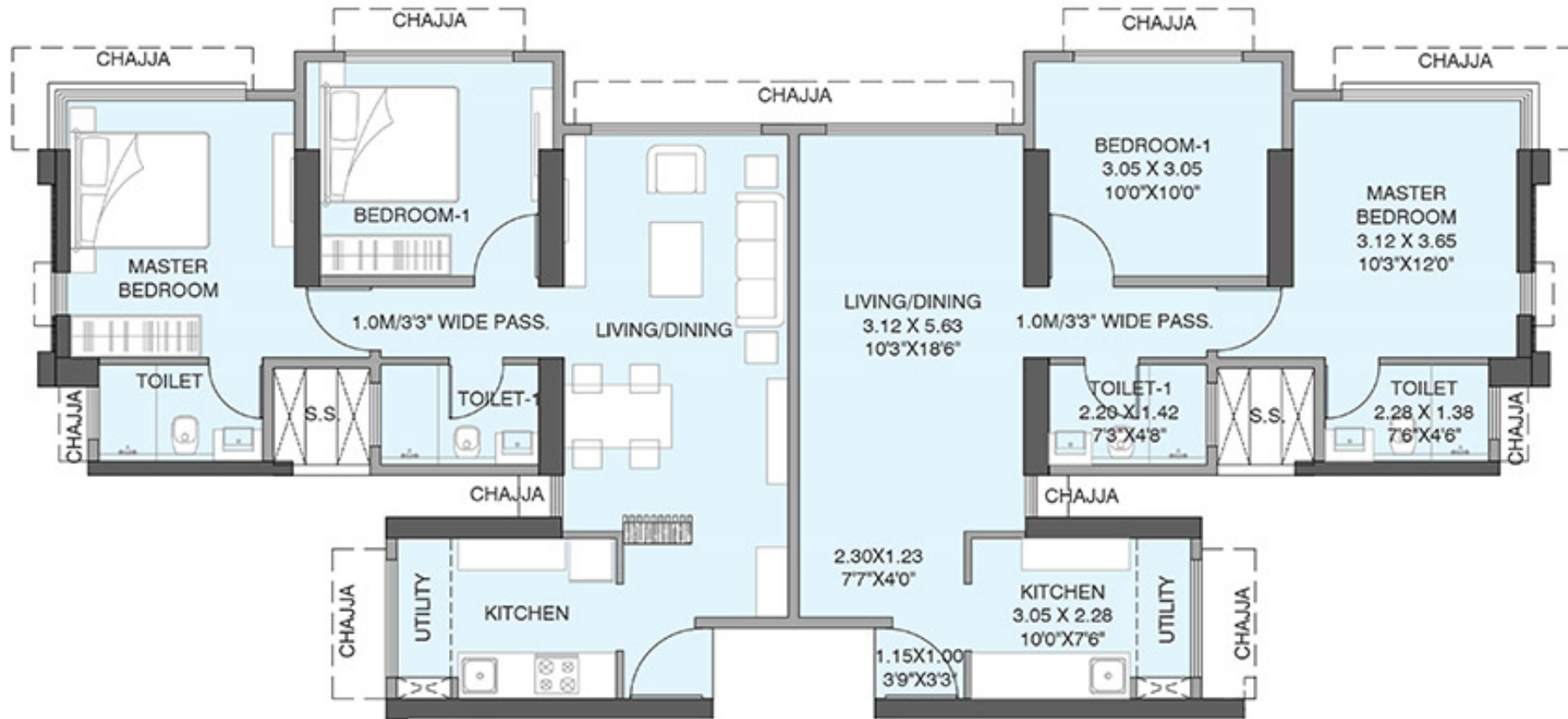
MahaRERA Registration No. P51800024368 available at website: <http://maharera.mahaonline.gov.in>

Disclaimer - The information provided in this advertisement, including all pictures, visuals, perspective views of the building and amenities are as per architectural drawings and the same shall be constructed subject to approvals of competent authorities and shall be in compliance of RERA Act and Rules and Regulations. No Objection Certificate (NOC) permission of the mortgagee Bank would be provided for sale of flats/units/property, if required. Wing B has been represented as EDEN. \*T & C Apply.

## Unit Plan - EDEN

8<sup>th</sup> to 13<sup>th</sup>, 15<sup>th</sup> to 20<sup>th</sup>, 22<sup>nd</sup> to 27<sup>th</sup>, 29<sup>th</sup> to 34<sup>th</sup> & 36<sup>th</sup>

TW gardens  
KANDIVALI (E)



RERA Carpet Area 63.15 Sq.M. (680 Sq.ft)



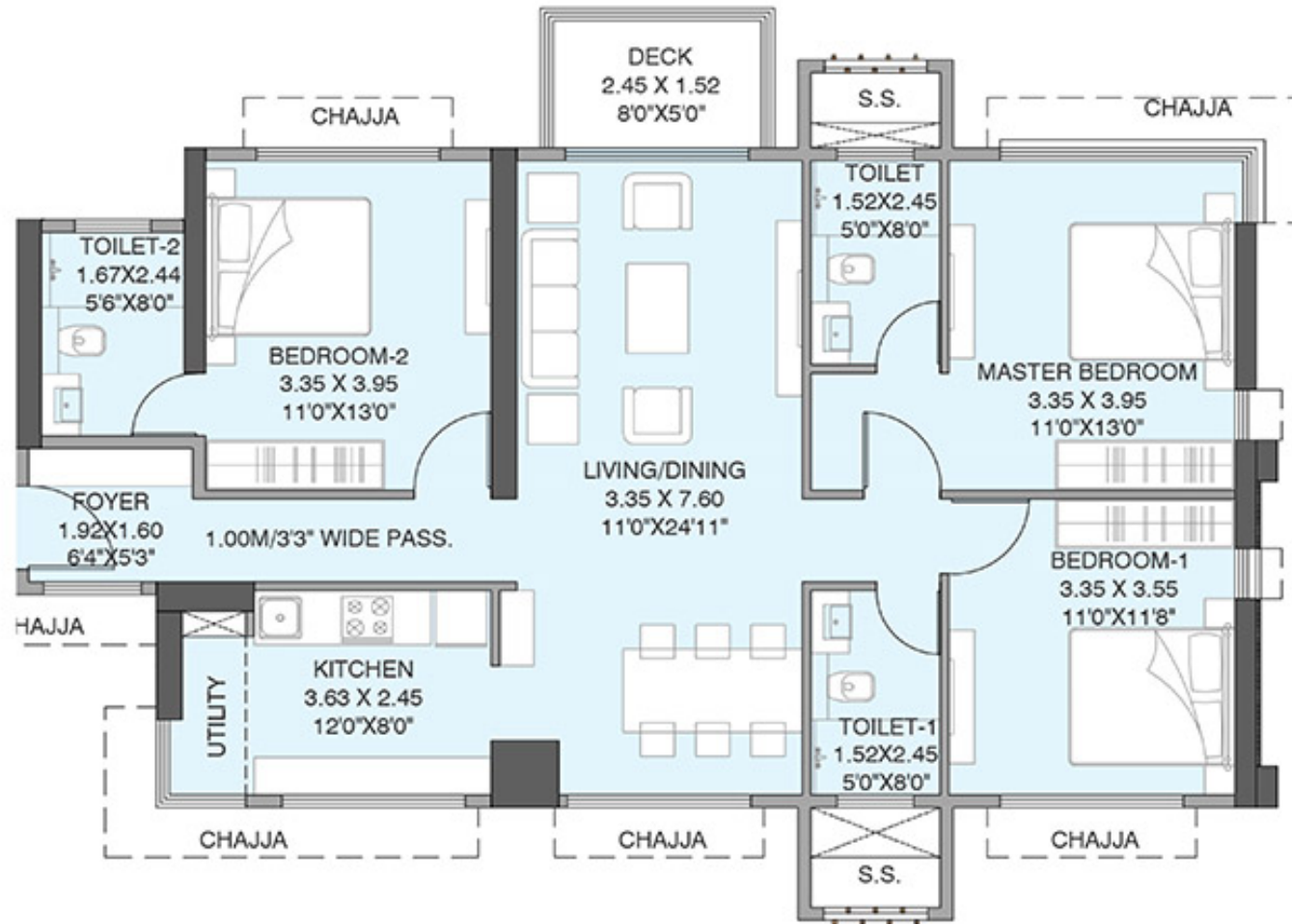
MahaRERA Registration No. P51800024368 available at website: <http://maharera.mahaonline.gov.in>

Disclaimer - The information provided in this advertisement, including all pictures, visuals, perspective views of the building and amenities are as per architectural drawings and the same shall be constructed subject to approvals of competent authorities and shall be in compliance of RERA Act and Rules and Regulations. No Objection Certificate (NOC)/ permission of the mortgagee Bank would be provided for sale of flats/units/property, if required. Wing B has been represented as EDEN. \*T & C Apply.

## Unit Plan - EDEN

8<sup>th</sup> to 13<sup>th</sup>, 15<sup>th</sup> to 20<sup>th</sup>, 22<sup>nd</sup> to 27<sup>th</sup>, 29<sup>th</sup> to 34<sup>th</sup> & 36<sup>th</sup>

TW gardens  
KANDIVALI (E)



RERA Carpet Area 101.42 + Balcony 3.72 Sq.M. (1092 + 40 Sq.ft)



MahaRERA Registration No. P51800024368 available at website: <http://maharera.mahaonline.gov.in>

Disclaimer - The information provided in this advertisement, including all pictures, visuals, perspective views of the building and amenities are as per architectural drawings and the same shall be constructed subject to approvals of competent authorities and shall be in compliance of RERA Act and Rules and Regulations. No Objection Certificate (NOC) permission of the mortgagee Bank would be provided for sale of flats/units/property, if required. Wing B has been represented as EDEN. \*T & C Apply.